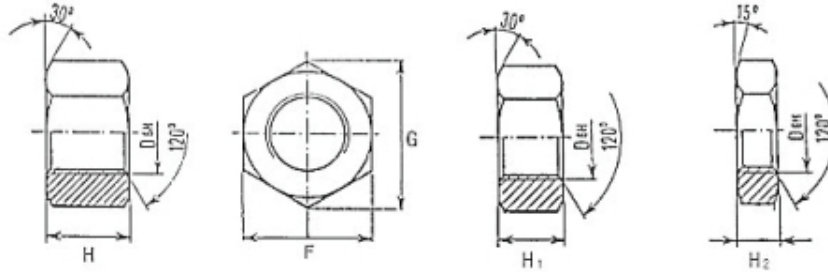


METRIC SIZES



HEX NUTS

DIMENSIONS OF HEX NUTS WITH METRIC COARSE AND FINE PITCH THREAD in mm

Nom. Size	F Width Across Flats		G Width Across Corners		H ISO 4033-ex UNI 5587		H1 ISO 4032-ex DIN 934 UNI 5588		H2 ISO 4035-ex DIN 936 UNI 5589		Weight ISO 4033	Weight ISO 4032	Weight ISO 4035
	max	min	max	min	max	min	max	min	max	min			
M8	13	12.730	15.000	14.380	8	7.64	6.5	6.14	5	4.70	0.0057	0.0046	0.0035
M10	17	16.730	19.600	18.900	10	9.64	8	7.64	6	5.70	0.0126	0.0100	0.0077
M12	19	18.670	21.900	21.100	12	11.57	10	9.64	7	6.64	0.0181	0.0151	0.0116
M14	22	21.670	25.400	24.490	14	13.57	11	10.36	8	7.64	0.030	0.0235	0.0176
M16	24	23.670	27.700	26.750	16	15.57	13	12.30	8	7.64	0.0374	0.0304	0.023
M18	27	26.670	31.100	30.140	18	17.57	15	14.30	9	8.64	0.0522	0.0435	0.0332
M20	30	29.670	34.600	33.530	20	19.48	16	14.90	9	8.64	0.0734	0.0587	0.0438
M22	32	31.610	36.900	35.720	22	21.48	18	16.90	10	9.64	0.088	0.072	0.0541
M24	36	35.380	41.500	39.980	24	23.48	19	17.70	10	9.64	0.1242	0.0983	0.0733
M27	41	40.380	47.300	45.630	27	26.48	22	20.70	12	11.57	0.177	0.1442	0.1086
M30	46	45.380	53.100	51.280	30	29.48	24	22.70	12	11.57	0.2528	0.2022	0.1530
M33	50	49.260	57.700	55.800	33	32.38	26	24.77	14	13.57	0.328	0.2584	0.1964
M36	55	54.260	63.500	61.310	36	35.38	29	27.40	14	13.57	0.4452	0.3586	0.2711
M39	60	59.256	69.300	66.960	39	38.38	31	29.40	16	15.57	0.5885	0.4678	0.3549
M42	65	64.260	75.000	72.610	42	41.38	34	32.40	16	15.57	0.7298	0.5908	0.4500
M45	70	69.260	80.800	78.260	45	44.38	36	34.40	18	17.57	0.941	0.7528	0.5751
M48	75	85.260	86.500	83.910	48	47.38	38	36.40	18	17.57	1.1354	0.8989	0.6883
M52	80	79.260	92.400	89.560	52	51.38	42	40.40	20	19.48	1.393	--	0.5953
M56	85	84.150	98.100	95.070	56	55.26	45	43.40	22	21.48	1.646	--	--
M60	90	89.130	103.900	100.720	60	59.26	48	46.40	24	23.48	1.9688	--	--
M64	95	94.130	109.700	106.370	64	63.26	51	49.10	26	25.48	2.2827	--	--
M68	100	99.130	115.500	112.020	68	67.26	54	52.10	26	25.48	2.710	--	--
M72	105	104.130	121.250	117.670	72	71.26	58	56.10	28	27.48	3.217	--	--
M76	110	109.130	127.000	123.320	76	75.26	61	59.10	30	29.48	3.700	--	--
M80	115	114.130	132.800	128.970	80	79.26	64	62.10	32	31.38	4.028	--	--
M85	120	119.130	138.600	134.620	85	84.13	68	66.10	34	33.38	4.5373	--	--
M90	130	129.000	150.100	145.770	90	89.13	72	70.10	36	35.38	5.8464	--	--
M95	135	134.000	155.900	151.420	95	94.13	76	74.10	38	37.38	6.300	--	--
M100	145	144.000	167.400	162.720	100	99.13	80	78.10	40	39.38	8.060	--	--